

# SERENA® MOVER™

Bridge the gap between development, test, and production

The features of Serena Mover benefit project leads, build engineers, release managers, production control specialists, and executives. Mover improves control over the distribution of assets across multiple locations, replacing insecure, untraceable manual processes. Mover can also help achieve ISO or other standards certification.

Mover provides these benefits by automating the deployment of assets residing in Serena PVCS Version Manager™, Serena Dimensions™ and third-party SCM solutions for testing, staging and production. Mover bridges the gaps between development, testing and production, enabling organizations to effectively manage the entire development lifecycle for legacy, custom, and web applications.

The key technical features that benefit the end user include a graphical user interface instead of scripts, automation of asset transfers, and such robust deployment options as scheduling and commands that can be run both before and after deployment. Together, these enable the cost and time savings of centralized control, increased productivity and greater deployment flexibility.

**MOVER OFFERS OUTSTANDING BENEFITS TO CUSTOMERS. IT:**

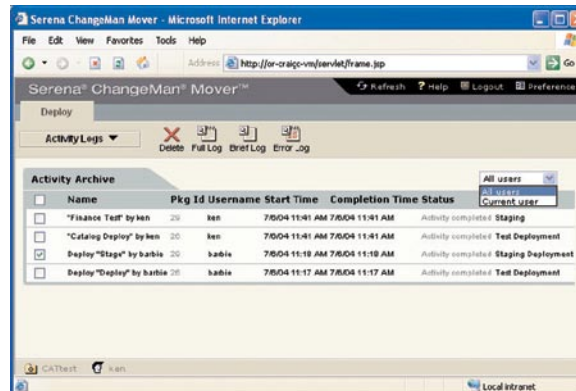
- Increases productivity by eliminating manual tasks and error-prone deployment scripts
- Ensures accountability by providing deployment logs and securing user access
- Reduces costly errors by eliminating unauthorized deployments
- Simplifies deployment setups through seamless integration with Serena Version Manager and Serena Dimensions

**CENTRALIZED CONTROL**

Mover centralizes administration of server setup, deployment mapping, asset selection, and scheduling into a single browser-based GUI, significantly reducing manual setup costs and subsequent maintenance, and eliminating the need for myriad deployment scripts.

**SCHEDULING**

Deployment tasks can be scheduled to occur just once, or as recurring tasks on a set schedule. Scheduled deployment tasks can also be started on the fly, without waiting for the scheduled time.



Users can filter deployment activities by user or by project. The "Current user/All users" displays activities that were started or scheduled just by the current user or by any user within the project. Additional reporting options include the ability to automatically email full, brief, and error logs.

### AUDITING

Deployment integrity can be verified using automatically generated log files for complete traceability and accountability. Mover also provides email notification options for either deployment errors or successful deployment completion. In addition, deployment activities can be displayed for users to see the status of current deployment activities, or to review information about deployment activities that have already been completed.

### INCREASED PRODUCTIVITY

PVCS Mover simplifies deployment setups via seamless integrations with Serena Dimensions™ and Serena PVCS® Version Manager™, and can be integrated into industry leading software configuration management tools.

### ROBUST DEPLOYMENT OPTIONS

**Pre-deployment and Post-deployment Commands.** Serena Mover facilitates running executables, such as batch files or command line actions, as part of pre-deployment or post-deployment activities, either on the originating Mover Server, or on deployment destination servers.

### SECURE DEPLOYMENT

Serena Mover ensures protection of digital assets when deploying to an FTP server. Mover deploys assets through firewalls, using a number of secure communication protocols, including SOCKS4/5 and Secure Sockets Layers (SSL).

### EMAIL NOTIFICATIONS

Emailed deployment reports ensure a manageable process. Users can also use the command line interface to extract deployment information for customizable reports.

### DEPLOYMENT AGENTS

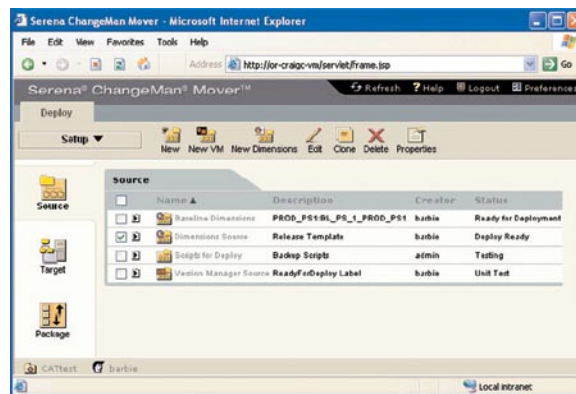
Serena Mover Agents can optionally trigger commands on remote servers as part of a deployment. All Agent communications are encrypted. For example, Agents can be used for activities such as compiling JAR files on the target server after deployment is complete, or for initiating subsequent processes such as distribution by Tivoli or Microsoft SMS.

### COMMAND LINE INTERFACE

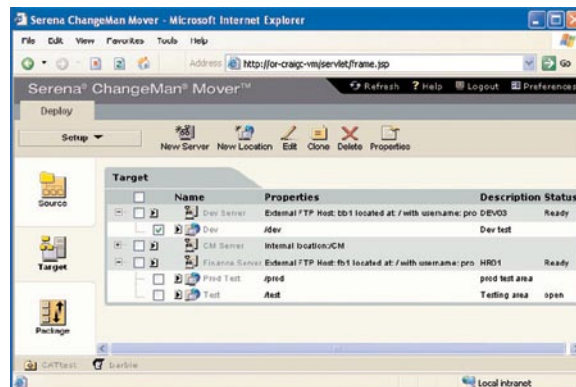
The Mover command line interface permits remotely controlled asset deployment operations from applications such as Serena Dimensions or other SCM applications.

### ROLE-BASED SECURITY

Mover ensures deployment integrity by establishing user and group permission profiles, and it can scale access to restricted functionality across various levels of security groups.



Mover supports the creation of a single project to include PVCS Version Manager, Dimensions, and local-file sources. Users can sort on all columns, including a userdefinable Status column. Mover increases productivity by allowing users to clone sources, facilitating rapid re-use of existing sources.



Servers and Locations are consolidated into a single view displayed in collapsible lists. Mover targets Clone functionality that allows users to quickly create new targets and locations by duplicating existing targets and locations

#### SYSTEM SPECIFICATIONS

Mover uses a J2EE web application/thin client approach to manage enterprise content. Client use and availability is based on browser access, requiring no desktop installation.

Based on industry standards, Mover supports the following platforms and technologies. Please contact Serena Sales offices in your region for more detailed information.

#### SERVER PLATFORMS

- Windows
- Solaris
- Red Hat
- SuSe

#### PROTOCOLS

- HTTP(S), SSL, XML
- FTP: Passive, SSL, Socks 4/5, Explicit, Clear Channel

#### AGENT PLATFORMS

- Windows
- Solaris
- Linux
- AIX
- HP-UX

#### CLIENT REQUIREMENTS

- Internet Explorer 6 SP1 or higher
- Mozilla 1.6 or higher

#### DATABASE PLATFORM

- Sybase iAnywhere (runtime included)

#### APPLICATION SERVER

- Apache Tomcat (included)

---

#### ABOUT SERENA

Serena Software, the Change Governance™ leader, helps more than 15,000 organizations around the world—including 96 of the Fortune 100 and 90 of the Global 100—turn change into a business advantage. Serena is headquartered in San Mateo, California, and has offices throughout the U.S., Europe, and Asia Pacific.

#### CONTACT

Learn more about the enterprise-wide power of Serena Mover by visiting [www.serena.com](http://www.serena.com) or contacting one of our sales representatives in your area.

#### Serena Worldwide Headquarters

Serena Software, Inc.  
Corporate Offices  
2755 Campus Drive  
Third Floor  
San Mateo, California 94403-2538  
United States

800.457.3736 T  
650.522.6699 F  
[info@serena.com](mailto:info@serena.com)

#### Serena European Headquarters

Serena Software Europe Ltd.  
Hertfordshire  
Abbey View Everard Close  
St. Albans  
Hertfordshire AL1 2PS  
United Kingdom

+44 (0)800.328.0243 T  
+44 (0)1727.869.804 F  
[ukinfo@serena.com](mailto:ukinfo@serena.com)

#### Serena Asia Pacific Headquarters

Serena Software Pte Ltd  
360 Orchard Road  
#12-10  
International Building  
Singapore 238869

+65 6834.9880 T  
+65 6836.3119 F  
[apinfo@serena.com](mailto:apinfo@serena.com)

