

CHANGEMAN ZMF CLIENT PACK – CHANGEMAN ZDD

Increase Developer Productivity, Efficiency, and Flexibility

Z/OS DESKTOP DEVELOPMENT

Serena ChangeMan ZDD provides integration with ChangeMan ZMF to enable efficient and secure development of mainframe applications on the desktop.

- Reduces mainframe resource usage
- Improves quality by extending mainframe Software Change and Configuration Management (SCCM) to the desktop
- Protects against lost code and overlays by eliminating mass file transfers
- Supports the flexibility of the windows desktop while providing governance of the mainframe

FEATURES

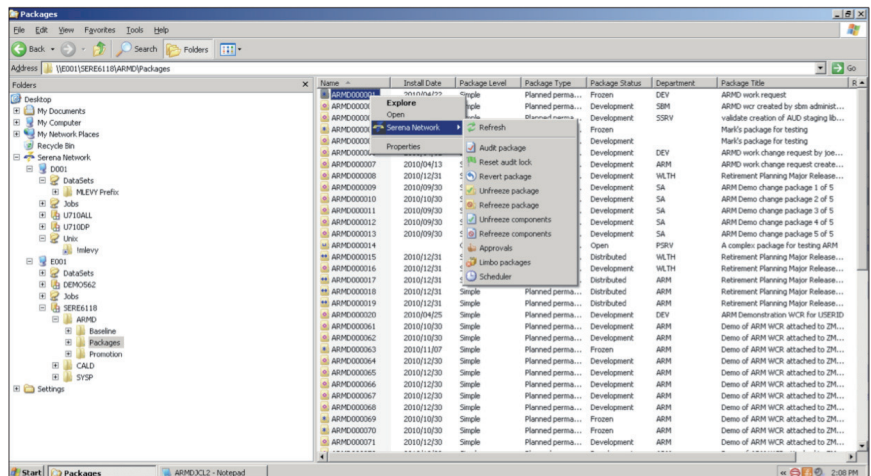
- Full ChangeMan ZMF lifecycle support
- Maps z/OS file system as a windows drive letter
- Supports both HFS/ZFS and z/OS file systems
- Provides seamless access to datasets and JES job queue on z/OS
- Supports multiple editors
- Supports SAF, RACF, ACF2, and Top Secret
- Provides centralized client configuration support

BUILD DESKTOP-DEVELOPED MAINFRAME APPLICATIONS SECURELY AND SEAMLESSLY

Desktop development of mainframe applications is commonplace today. Powerful integrated development environments (IDEs) provide a productive environment for editing and testing today's mainframe applications.

Serena ChangeMan ZDD solves the integrity, security, and resource issues associated with desktop development by mapping the mainframe server as a drive on the desktop. This enables developers to access mainframe assets directly and immediately from their desktop. ChangeMan ZDD integrates desktop IDEs into the software development lifecycle, providing direct access to mainframe assets, eliminating mass file transfers, and extending the protection of Serena ChangeMan ZMF to development on the desktop.

Because ChangeMan ZDD integrates into the intuitive Microsoft® Windows Explorer interface, it eliminates the need for mainframe training, which provides tremendous staff flexibility. The "edit in place" capability of ChangeMan ZDD prevents software components from getting lost or overlaid during manual upload/download procedures. Code can't be lost due to desktop crashes or laptop theft. Audit trails are kept intact.



Serena ChangeMan ZDD gives desktop programmers direct access to software assets residing on the mainframe without file transfers, and it extends its powerful enterprise change management solution by transparently integrating the desktop development tool of choice.

SUPPORTED PLATFORMS

- Microsoft Windows XP
- Microsoft Windows Vista (32 or 64 bit)
- Microsoft Windows 7 (32 or 64 bit)

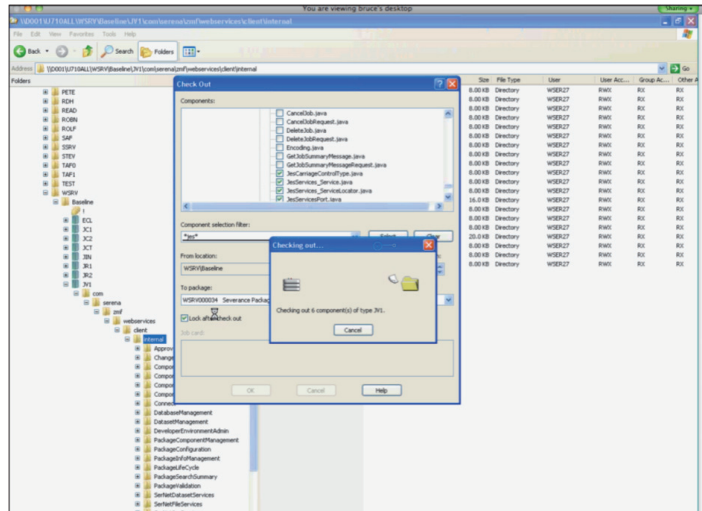
RELATED SERENA PRODUCTS

- ChangeMan ZMF Client Pack
 - ChangeMan ZDD
 - ChangeMan ZMF for Eclipse

INTEGRATED TO LEVERAGE LEGACY AND DISTRIBUTED SYSTEMS

Serena ChangeMan ZDD is a software infrastructure technology that makes mainframe data sets and job output appear in Windows Explorer and other desktop applications as though they were local files or files on a Windows network. It simulates a network file system on a Windows platform that is networked with an IBM z/OS® operating system.

From your PC, you can access files, execute jobs, and examine output from jobs that reside on a z/OS server. No special execution environment or programming interface is required.



ChangeMan ZDD also gives you desktop access to Serena ChangeMan ZMF. ChangeMan ZMF instances, applications, packages, and libraries appear as folders in Windows Explorer and other PC applications. You perform many ChangeMan ZMF functions from your PC, and all of the software configuration management rules and restrictions set up in ChangeMan ZMF apply.

XML-ENABLED ACCESS TO ZMF ASSETS AND INFORMATION FROM POPULAR DESKTOP TOOLS

Serena ChangeMan ZDD enables ubiquitous access to the mainframe from Open Database Connectivity (ODBC) and XML tools, including Microsoft Excel, Microsoft Project, and SAP Crystal Reports. In addition, it provides an elegant interface for submitting mainframe jobs, viewing JES input/output queues, and integrating mainframe test environments.

Serena ChangeMan ZDD, included in the ChangeMan ZMF Client Pack, provides integration with ChangeMan ZMF to enable efficient and secure development of mainframe applications on the desktop. Combine the flexibility of the Windows desktop with the governance of the mainframe.

CONTACT

Website: www.serena.com

Phone: 800-547-7827

Email: info@serena.com



ABOUT SERENA

Serena Software provides solutions that orchestrate application delivery, IT operations and business processes for the Global 2000. Serena's mission is to help enterprises orchestrate their world. Its 3,000 active enterprise customers, encompassing almost one million users worldwide, have made Serena the largest independent ALM vendor, and are now using Serena to orchestrate IT service management and many other processes. Headquartered in Silicon Valley, Serena serves enterprise customers from 29 offices in 14 countries. Serena is a portfolio company of Silver Lake Partners, the leader in private investments in technology-enabled industries. For more information on Serena, visit <http://www.serena.com>.