

CHANGEMAN ZMF CLIENT PACK – CHANGEMAN ZMF FOR ECLIPSE

Increase Productivity, Efficiency, and Flexibility

MODERN DEVELOPMENT ENVIRONMENT FOR Z/OS

- Support for native Eclipse Workbench as well as the IBM Rational Developer for System z (RDz) software
- Full integration with version control, build management, release and deploy capabilities of ChangeMan ZMF
- Single workbench access point to multiple ChangeMan ZMF sites simplifying concurrent and parallel development
- Single Perspective and Serena Explorer view for both ChangeMan ZMF and Dimensions CM
- Simple navigation and management of mainframe software assets
- Support for legacy and contemporary languages

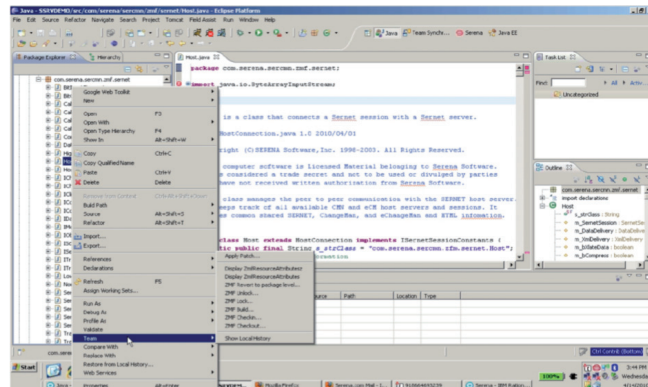
FEATURES

- Full ChangeMan ZMF lifecycle support
- Eclipse Workbench and IBM Rational Developer for System z
- Java, COBOL, Assembler, and other languages and mainframe assets
- HFS/ZFS and z/OS file systems
- Access to JES job queue on z/OS
- Submits jobs or ZMF XML Services data streams to the mainframe for execution
- Supports SAF, RACF, ACF2, and Top Secret
- Centralized client configuration support

MODERN DEVELOPMENT ENVIRONMENT FOR THE MAINFRAME

The sheer scale and complexity of enterprise applications on the mainframe require robust build management and software deployment capabilities across the entire enterprise. Moreover, enterprise applications in industries such as banking, financial services, and insurance are highly regulated, with specific compliance requirements for software change control. Serena ChangeMan ZMF has always satisfied these requirements for enterprise software repositories.

However, traditional enterprise programming languages are not ideally suited to the development of today's applications. Java has established itself as a preferred language for large-scale enterprise development. In addition, with so many prebuilt software development toolkits (SDKs), software libraries, code generators, debuggers, test tools, automated documentation tools, and other development tools available for numerous operating system platforms, Java has become a highly productive language for cross-platform and Web-enabled application development.



For these applications, ChangeMan ZMF and Serena ChangeMan ZMF for Eclipse now support the z/OS Unix Hierarchical File System (HFS) as personal development libraries and for baseline, staging, promotion, and production libraries. HFS libraries provide native support for long file names and Java classpaths.

Further, Java productivity enhancements in ZMF for Eclipse include native integration of ChangeMan ZMF functions with the Java perspective of the workbench through the "Team" contextual menu. Eclipse integration is important because the Java developer community has largely adopted the open-source Eclipse Workbench IDE as its development platform of choice.

SUPPORTED PLATFORMS

- Eclipse Workbench version 3.4 or higher
- IBM Rational Developer for System z version 7.5 or higher
- Microsoft Windows XP SP3
- Microsoft Windows Vista 32 bit
- Microsoft Windows 7 32 bit

RELATED SERENA PRODUCTS

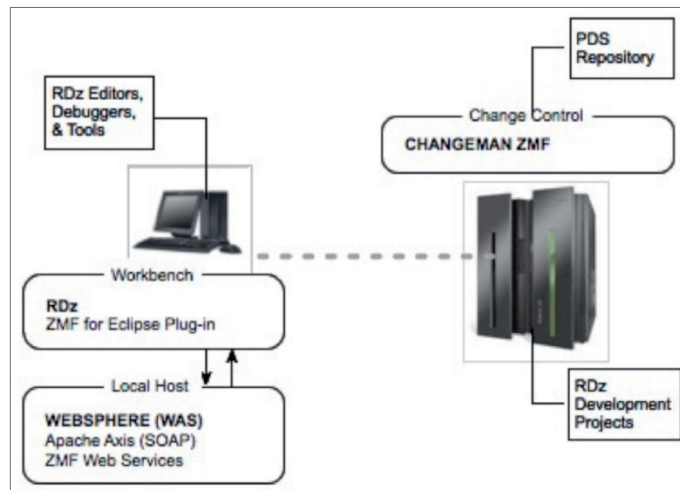
- ChangeMan ZMF Client Pack
 - ChangeMan ZDD
 - ChangeMan ZMF for Eclipse

INTEGRATED TO LEVERAGE LEGACY MAINFRAME APPLICATIONS

For the maintenance of legacy enterprise mainframe COBOL applications, including applications built with DB2, the IBM Rational Developer for System z (RDz) workbench provides a powerful and wide-ranging set of development, debugging, and testing tools with GUI ease of use.

Built on an Eclipse base, the RDz development tools complement the robust enterprise-scale software change control, build management, and development features of ChangeMan ZMF.

ChangeMan ZMF for Eclipse enables developers to check out source code, JCL, associated DB2 plans, and artifacts from a ChangeMan ZMF repository baseline into an RDz development project. Once developers are finished with the development and testing of the application code using RDz, they can leverage the rich set of ChangeMan ZMF commands to check in, freeze, and promote the changes on the mainframe. This is done securely and accurately every time, providing a complete audit trail.



ChangeMan ZMF for Eclipse provides a unified and configurable view of software resources in all personal development libraries on the mainframe, as well as baseline, staging, and promotion libraries in the ZMF repository. Compressed output listings can be read on the desktop in the Serena perspective using the Serena-provided editor installed with the Eclipse plug-in. The z/OS Explorer view of RDz provides access to project resources, and job output in the JES job queue can be accessed in either view. With ChangeMan ZMF for Eclipse, you can save money, increase productivity, and develop modern mainframe applications.

CONTACT

Website: www.serena.com

Phone: 800-547-7827

Email: info@serena.com



ABOUT SERENA

Serena Software provides solutions that orchestrate application delivery, IT operations and business processes for the Global 2000. Serena's mission is to help enterprises orchestrate their world. Its 3,000 active enterprise customers, encompassing almost one million users worldwide, have made Serena the largest independent ALM vendor, and are now using Serena to orchestrate IT service management and many other processes. Headquartered in Silicon Valley, Serena serves enterprise customers from 29 offices in 14 countries. Serena is a portfolio company of Silver Lake Partners, the leader in private investments in technology-enabled industries. For more information on Serena, visit <http://www.serena.com>.