

# SERENA® TEAMTRACK® WITH PROCESS-TRAK™ FROM SES

The fast, efficient track to CMMI

**KEY FEATURES**

**SERENA TEAMTRACK**

Streamline, automate, and enforce critical processes

- Ensure uniform, repeatable, traceable processes
- Improve information flow and collaboration
- Implement consistent process management practices across enterprise silos, ensuring that work is coordinated efficiently and effectively
- Evaluate process efficiency in order to optimize processes over time
- Gain visibility into quality metrics and information
- Enforce best practices, standards, and compliance

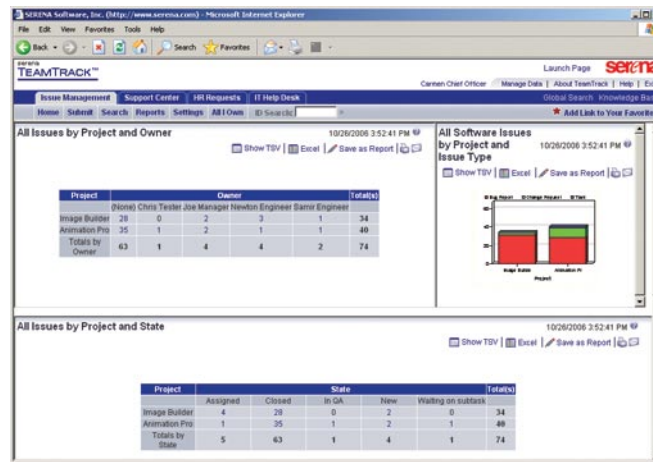
**PROCESS-TRAK FROM SES**

Get on the fast-track to CMMI process compliance

- Automate all 21 of the CMMI Level 3 Process Areas
- Reduce complex processes and procedures to role-based steps with clearly defined responsibilities
- Utilize a fully integrated Process Asset Library (PAL) with document management and workflow
- Notify project personnel of process-related events
- Create project data and metrics for decision makers
- Identify and prevent deviations in processes

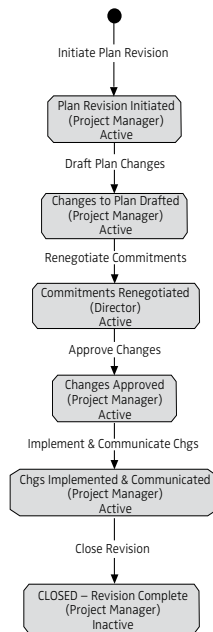
For companies striving to achieve CMMI compliance, it can be extremely labor-intensive to define workflows and lay out software and systems development processes from scratch. Jump-starting the process with pre-designed workflows can save a significant amount of time and money. Serena TeamTrack and Process-Track from SES provide an integrated solution that can put you on the fast-track to CMMI process compliance.

TeamTrack, used by thousands of companies around the world, enables you to control and automate business processes, manage issues throughout the lifecycle of IT projects, and facilitate collaboration among stakeholders. TeamTrack ensures that work is coordinated efficiently and effectively so you can optimize processes, keep projects on schedule, and reduce costs.

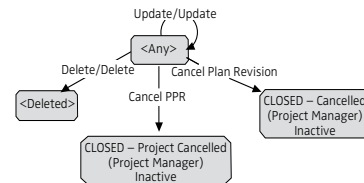


With TeamTrack's dashboard interface, managers can easily chart team progress, identify trends, spot bottlenecks, generate reports, and keep projects on schedule.

Process-Trak, from Software Engineering Services (SES), enables you to quickly and easily design, automate, and enforce CMMI-compliant processes. Built on the solid foundation of TeamTrack, Process-Trak provides a complete set of "ready to use" workflows, reports, and process assets that are designed to automate CMMI process areas. Process-Trak's versatile, user-friendly templates include comprehensive reporting options and detailed audit trails. In addition, Process-Trak provides the documentation required for successful CMMI assessments. With Process-Trak, you can quickly design repeatable processes to improve your organization's operating efficiency.



A Project Planning Process Area workflow example. Process-Trak automates all 24 of the CMMI Level Process-Areas.



Together, TeamTrack and Process-Trak enable you to streamline, automate, and enforce any business process while accelerating your organization’s achievement of CMMI compliance.

### ABOUT SERENA

Serena Software, the Change Governance™ leader, helps more than 15,000 organizations around the world—including 96 of the Fortune 100 and 90 of the Global 100—turn change into a business advantage. Serena is headquartered in San Mateo, California, and has offices throughout the U.S., Europe, and Asia Pacific.

### ABOUT SES

SES, a CMMI Maturity Appraised Level 3 Company, has proven expertise in the following disciplines: process improvement, process re-engineering, change management, program/project management, IT testing, information security, quality control and configuration management, and IV&V. Serving Fortune 200 companies as well as federal and state government, SES is recognized as a premier IT solutions provider.

### CONTACT

Learn more about the power of Serena TeamTrack and Process-Track from SES by visiting [www.serena.com](http://www.serena.com), [www.process-trak.com](http://www.process-trak.com), or contacting one of our sales representatives in your area.

#### Serena Worldwide Headquarters

Serena Software, Inc.  
Corporate Offices  
2755 Campus Drive  
Third Floor  
San Mateo, California 94403-2538  
United States

800.457.3736 T  
650.522.6699 F  
info@serena.com

#### Serena European Headquarters

Serena Software Europe Ltd.  
Abbey View Everard Close  
St. Albans  
Hertfordshire AL1 2PS  
United Kingdom

+44 (0)800.328.0243 T  
+44 (0)1727.869.804 F  
ukinfo@serena.com

#### Serena Asia Pacific Headquarters

Serena Software Pte Ltd  
360 Orchard Road  
#12-10  
International Building  
Singapore 238869

+65 6834.9880 T  
+65 6836.3119 F  
apinfo@serena.com

#### SES World Headquarters

Software Engineering Services, Inc.  
1311 Fort Cook Drive South  
Suite 100  
Bellevue, NE 68005

800.244.1278 T  
402.292.3271 F  
www.process-trak.com



Copyright © 2007 Serena Software, Inc. All rights reserved. Serena and TeamTrack are registered trademarks of Serena Software. Change Governance is a trademark of Serena Software, Inc. All other product or company names are used for identification purposes only, and may be trademarks of their respective owners. SB\_TT\_SES\_01\_Mar07.